

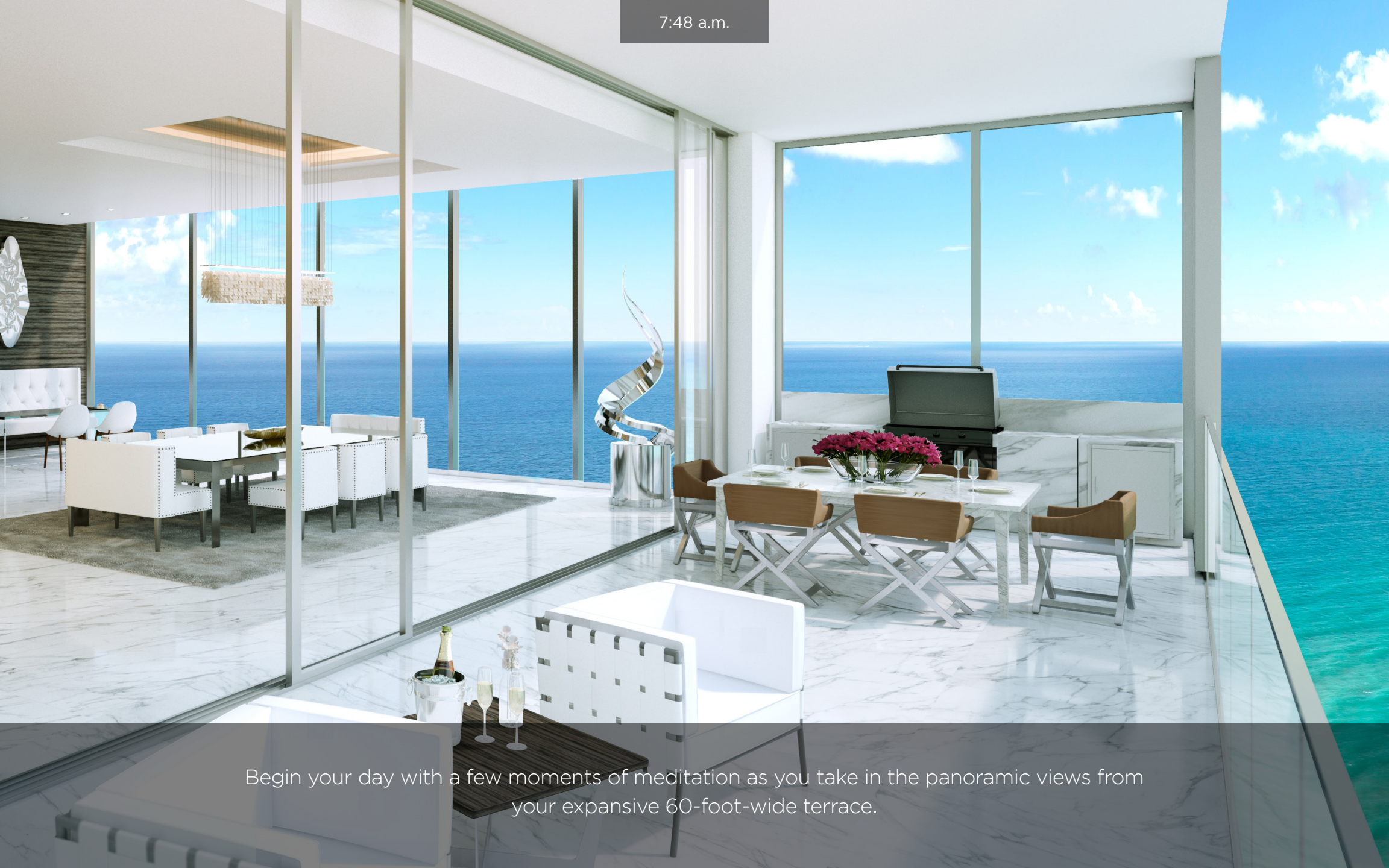
III U S E

OCEANFRONT RESIDENCES



Good morning.
Good life.

7:48 a.m.



Begin your day with a few moments of meditation as you take in the panoramic views from your expansive 60-foot-wide terrace.

8:55 a.m.



Power through your morning workout while gazing into the aqua blue waters of the Atlantic.

10:22 a.m.

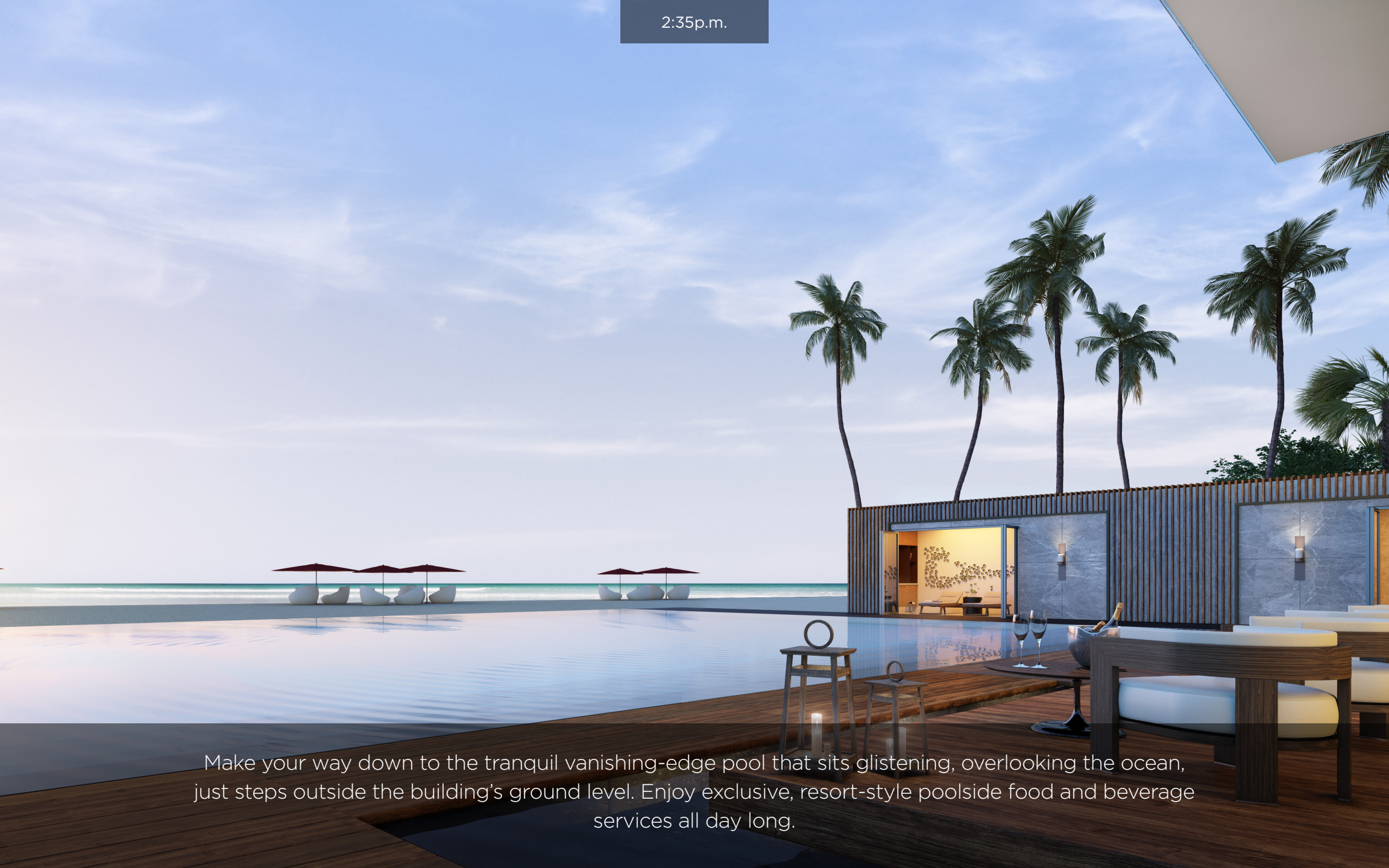


Follow your workout with a relaxing and rejuvenating visit to the sauna in the state-of-the-art spa.

12:31 a.m.

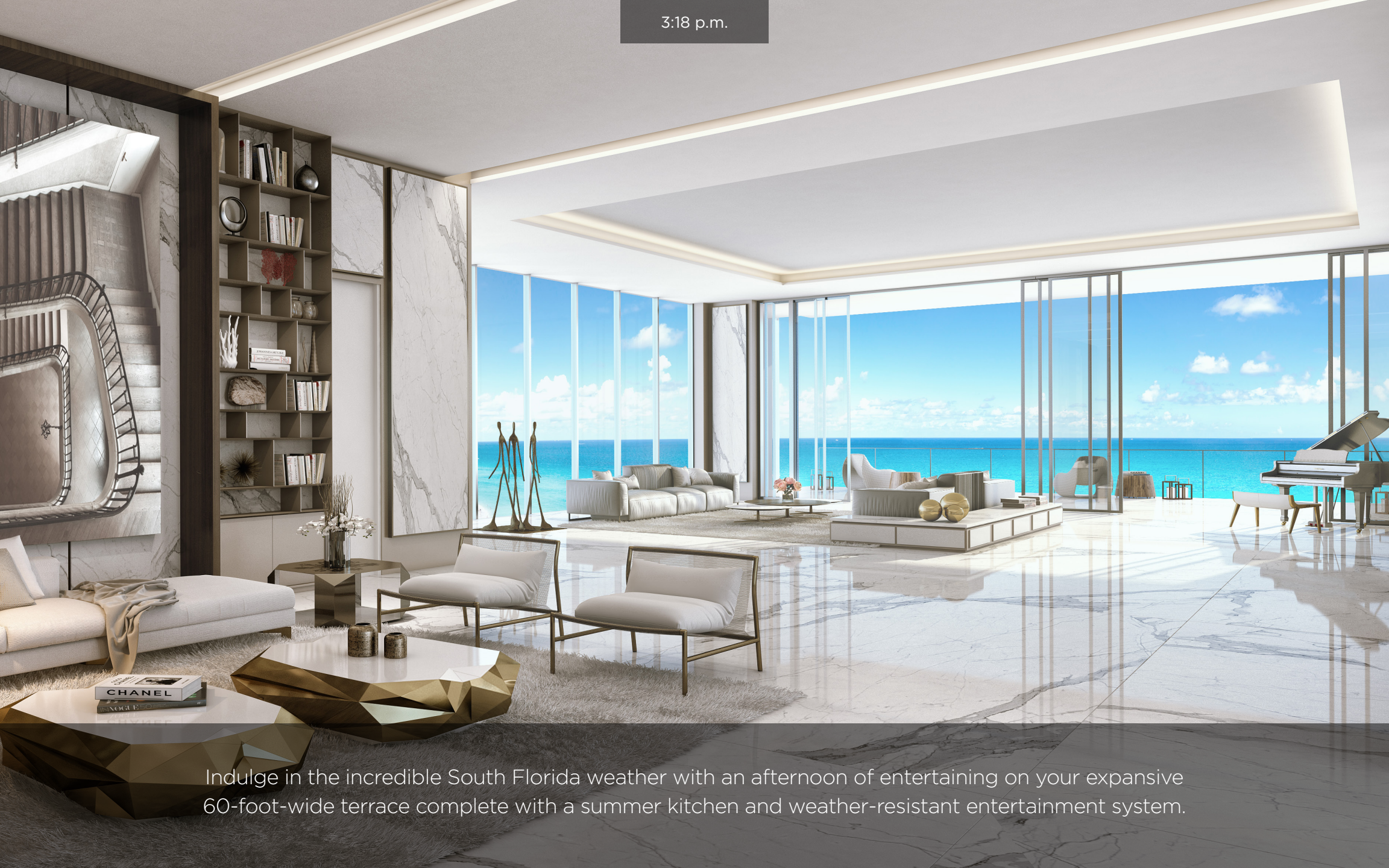
MUSE's automated parking system offers speed and convenience that makes running out for work, or morning errands, a seamless task.

2:35p.m.



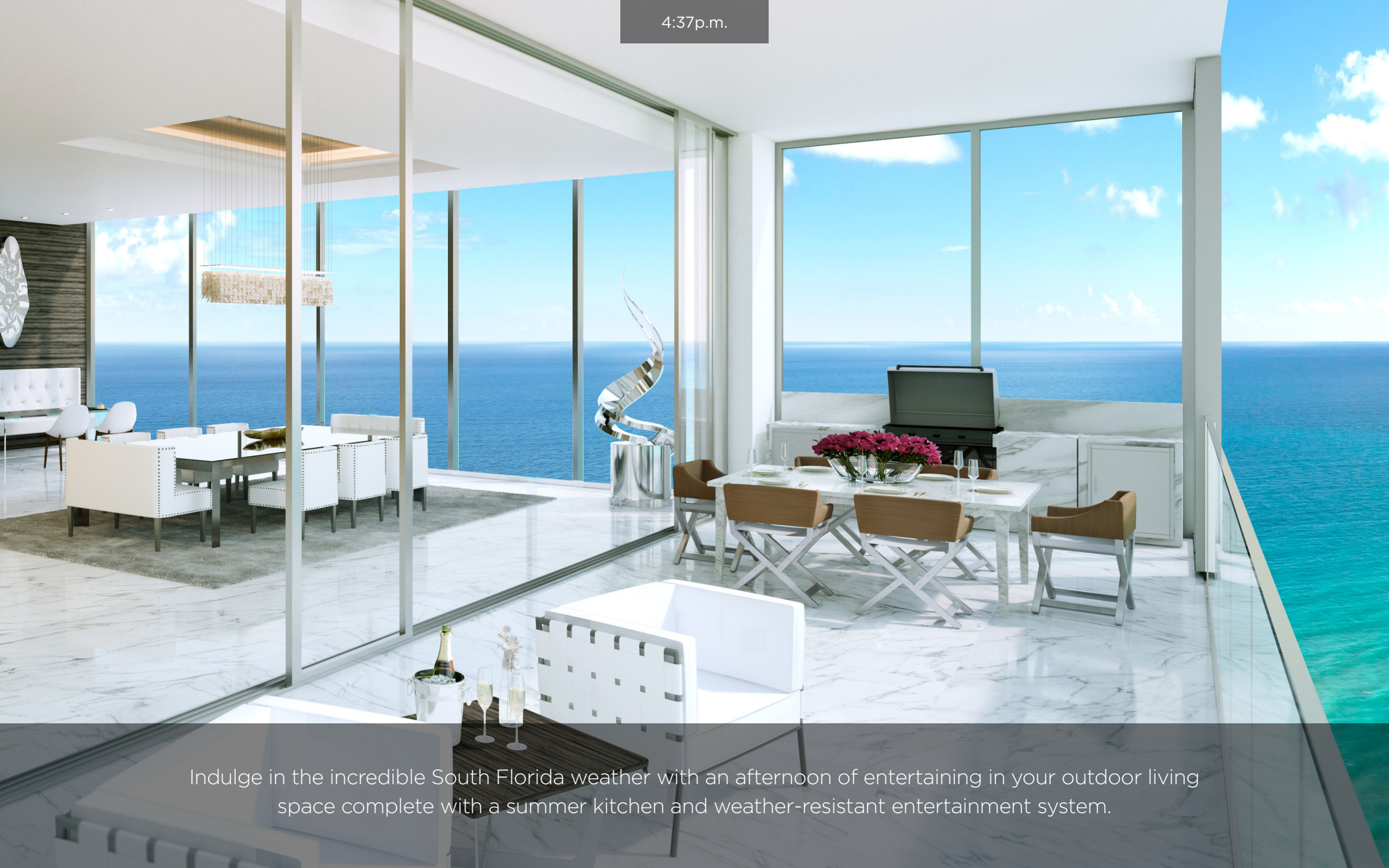
Make your way down to the tranquil vanishing-edge pool that sits glistening, overlooking the ocean, just steps outside the building's ground level. Enjoy exclusive, resort-style poolside food and beverage services all day long.

3:18 p.m.



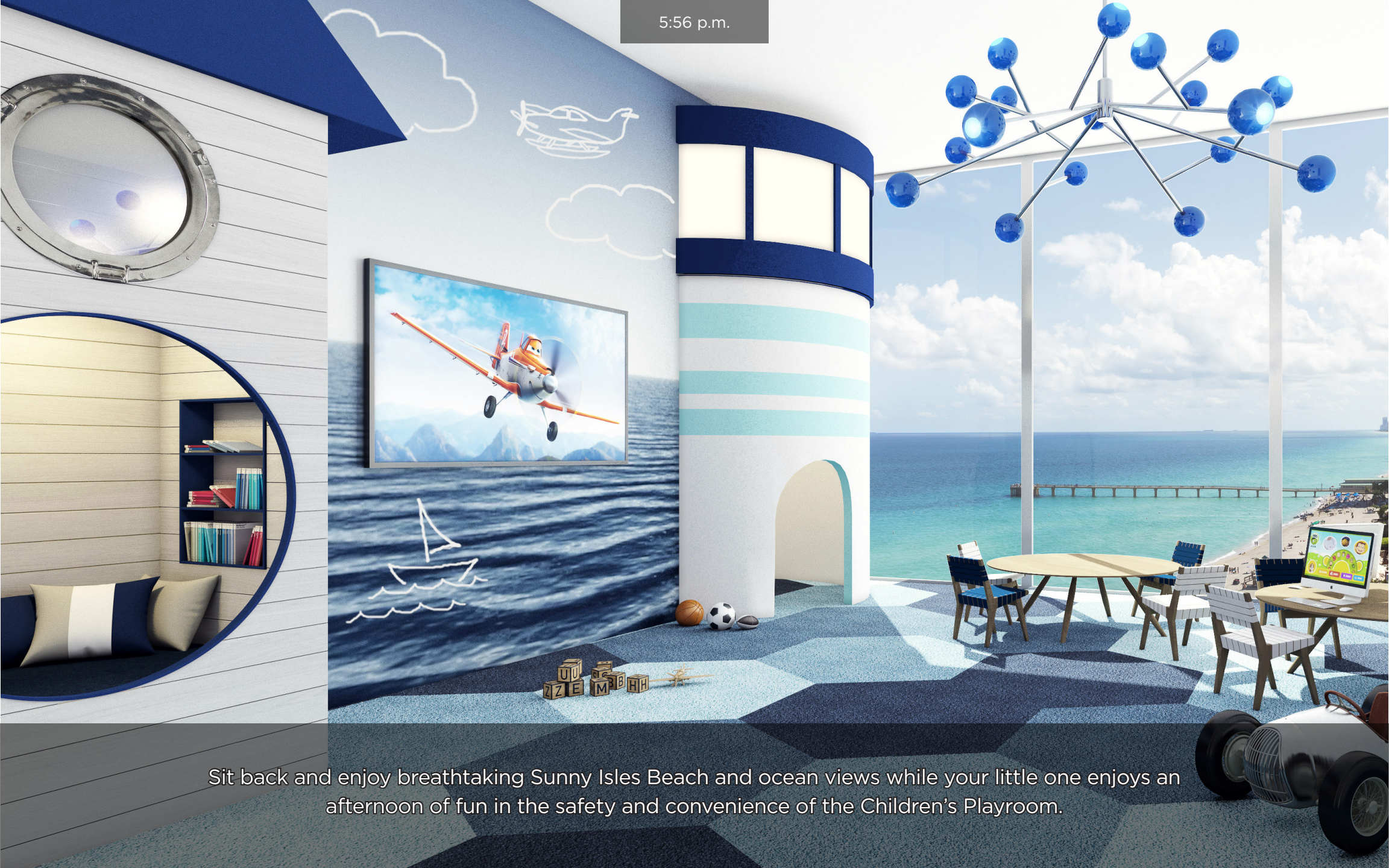
Indulge in the incredible South Florida weather with an afternoon of entertaining on your expansive 60-foot-wide terrace complete with a summer kitchen and weather-resistant entertainment system.

4:37p.m.



Indulge in the incredible South Florida weather with an afternoon of entertaining in your outdoor living space complete with a summer kitchen and weather-resistant entertainment system.

5:56 p.m.



Sit back and enjoy breathtaking Sunny Isles Beach and ocean views while your little one enjoys an afternoon of fun in the safety and convenience of the Children's Playroom.

7:04 p.m.

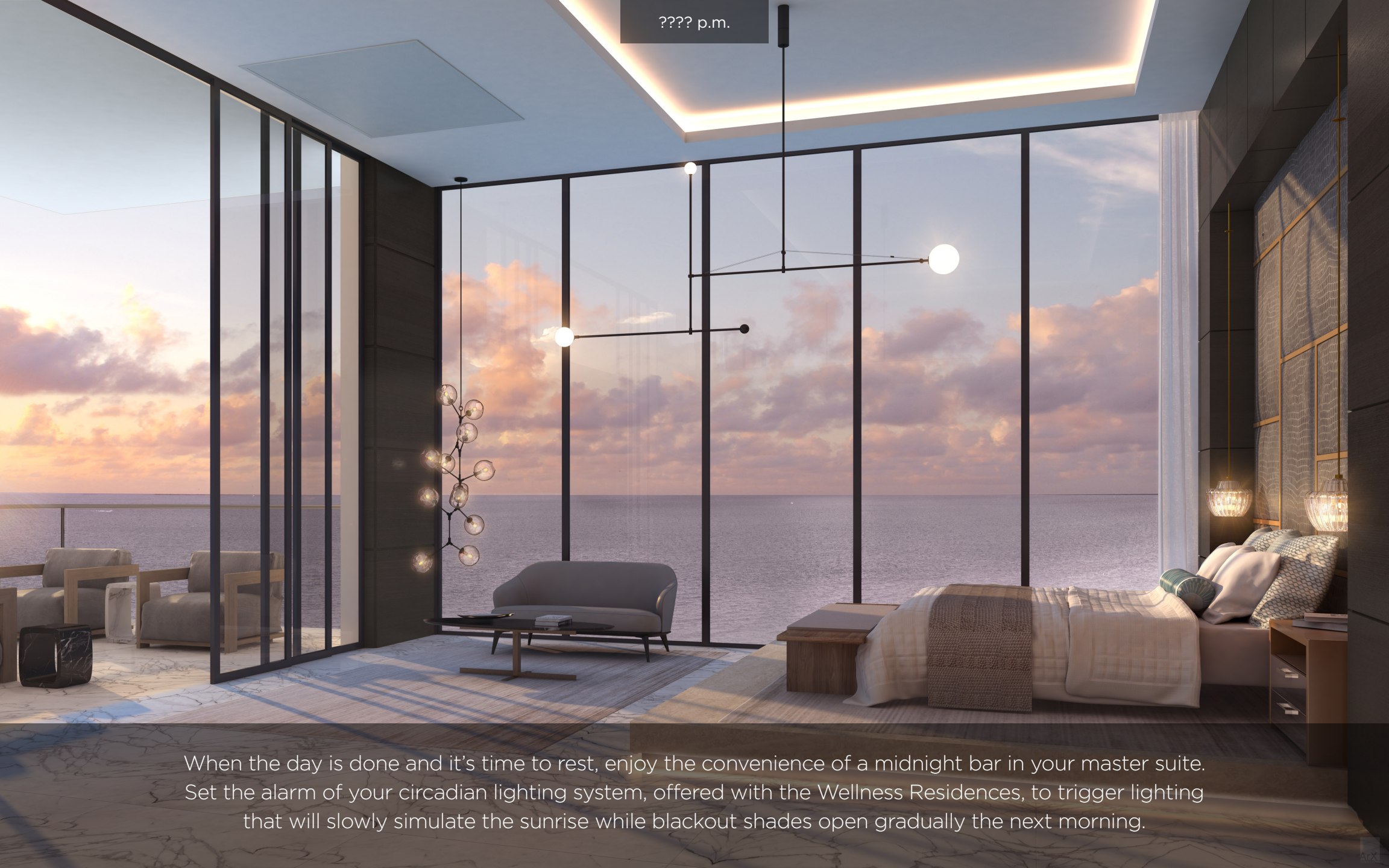
Wash away the day in a master bathroom featuring elegant Dornbracht and Duravit fixtures. The shower infuser in the Wellness Residences reduces chlorine and leaves you feeling refreshed.

10:35 p.m.



Preparing an evening meal in your world-class kitchen, complete with the latest Sub-Zero and Wolf appliances, endless marble countertops and exquisite custom Italian cabinetry, is an absolute pleasure.

???? p.m.



When the day is done and it's time to rest, enjoy the convenience of a midnight bar in your master suite. Set the alarm of your circadian lighting system, offered with the Wellness Residences, to trigger lighting that will slowly simulate the sunrise while blackout shades open gradually the next morning.

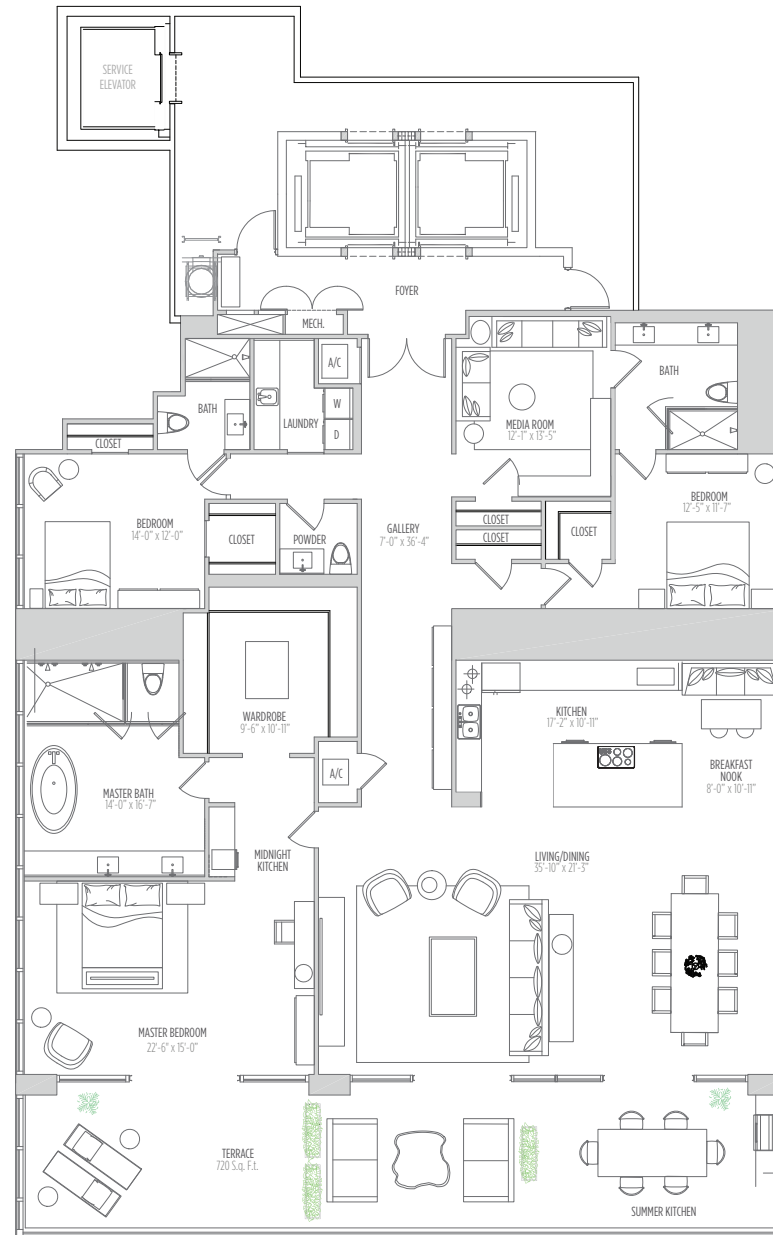
IIIUSE

OCEANFRONT RESIDENCES

EAST RESIDENCE

3 BEDROOMS | 3.5 BATHS | MEDIA ROOM

AC AREA:	3,635 SQ. FT.	338 M ²
TERRACE:	720 SQ. FT.	67 M ²
TOTAL:	4,355 SQ. FT.	405 M ²



YOUR VIEW EAST



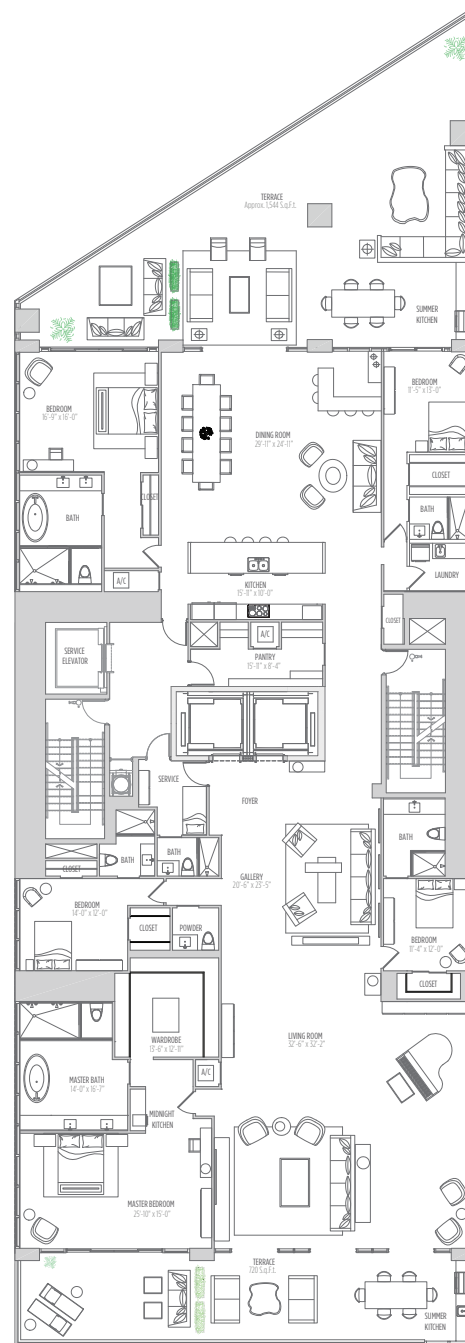
IIIUSE

OCEANFRONT RESIDENCES

LOWER PENTHOUSE

5 BEDROOMS | 6.5 BATHS | SERVICE SUITE

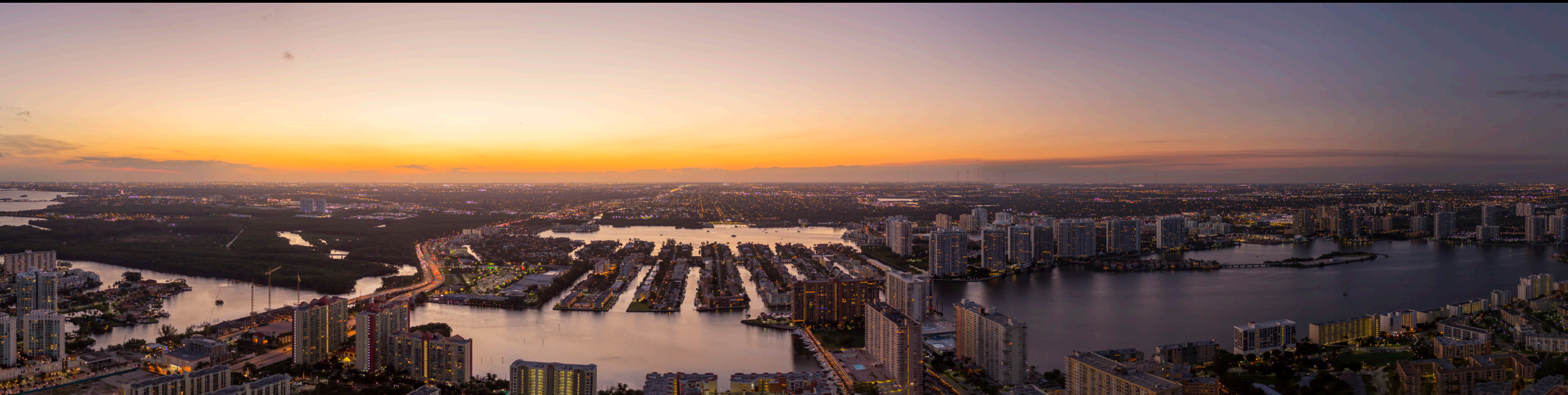
AC AREA:	6,106 SQ. FT.	567 M ²
TERRACE:	2,264 SQ. FT.	210 M ²
TOTAL:	9,470 SQ. FT.	880 M ²



YOUR VIEW - EAST



YOUR VIEW - WEST



III U S E

OCEANFRONT RESIDENCES